

# DIGITAL MAMMOGRAPHY

*advances  
cancer  
detection*

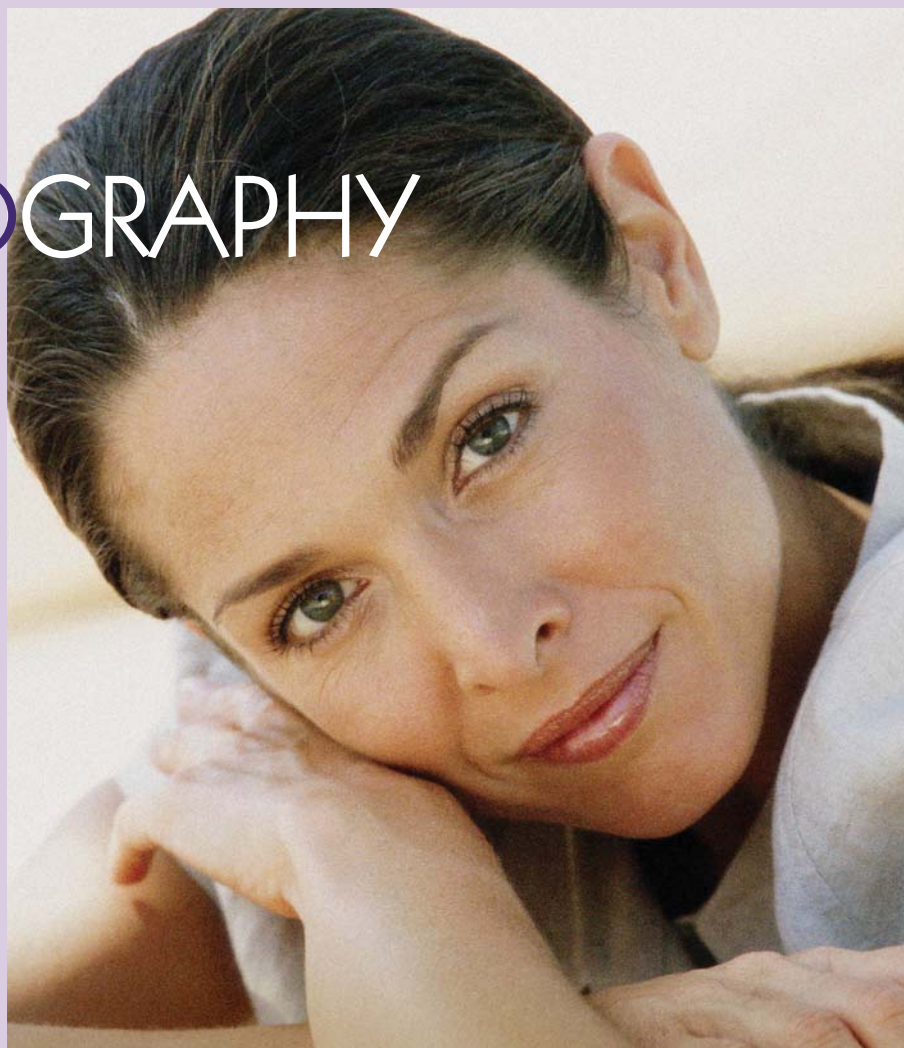
CLEARER.  
FASTER.  
ACCURATE.

**A**s the first healthcare provider in the Hudson Valley region to feature this particular state-of-the-art digital mammography system from Hologic, Orange Regional has made significant advancements in accurately detecting breast cancer.

This new mammography system incorporates revolutionary imaging technology that provides incredibly sharp images, has lower radiation exposure, and assists in the early diagnosis of breast cancer.

In a study of more than 40,000 women reported in the September 21, 2005 issue of the prestigious New England Journal of Medicine, researchers found that digital mammography was 15 percent more effective in detecting breast cancer than analog mammography, among women with dense breasts and under the age of 50.

Digital mammography is performed identically to conventional mammography from a patient's perspective. Compression is still needed, though exam times may be shorter and there could be a reduction in call-backs to obtain additional images.



“Our new mammography system takes less than half the time of traditional mammography...”

- Penny Lynch,  
mammography supervisor at  
Orange Regional Medical Center.

“Our new mammography system takes less than half the time of traditional mammography and has a lower radiation exposure compared to other digital units,” explains Penny Lynch, mammography supervisor at Orange Regional Medical Center.

Both traditional and digital mammography use X-rays to generate images of the breast. However, instead of using film to record images, a digital mammogram uses a computer and captures images electronically, similar to how digital cameras have replaced 35 mm cameras.

Digital mammography allows the radiologist to view the X-ray images more closely and zero in on areas of concern. This feature enables them to make immediate decisions about the case.

In conjunction with the digital mammography, Orange Regional also uses Computer-Aided Detection (CAD) software. CAD provides a “second read” of the mammogram by a computer. This assists the radiologist in making a more accurate diagnosis, like spellcheck in word processing.

Continued on page 22



Images provided by Hologic

## ORANGE REGIONAL MAMMOGRAPHY SERVICES

### ***Digital Mammography:***

- The Ray W. Moody, M.D. Breast Center at the Orange Regional Medical Pavilion, 75 Crystal Run Road in Middletown, NY.
- Orange Regional Diagnostic Imaging Center, 30 Hatfield Lane in Goshen, NY.

### ***Mammography:***

- The Monroe Patient Service Center, 52 Mill Pond Parkway in Monroe, NY.
- The Imaging Center for Women, 18 Old Monticello Road, Ferndale, NY

For fast, convenient scheduling, please call 1-866-ORMC-TEST (1-866-676-2837).

Orange Regional Medical Center also offers a Breast Cancer Support Group that meets at 7 p.m. the first Wednesday of the month at the Community Health Education Center, 110 Crystal Run Road in Middletown. For information, call 1-888-321-ORMC (6762).